

SPEC SHEET + MEASUREMENTS



New Era® Power Polo. NEA225

Product photo



With moisture wicking and stretch, you'll feel the power of performance in this polo that's also brushed for comfort.

- 4.7-ounce, 91/9 polyester/spandex
- Self-fabric collar
- Debossed New Era neck taping
- Heat transfer label for tag-free comfort
- Raglan sleeves
- 3-button placket with branded New Era buttons
- Reflective silver heat transfer New Era flag logo on left sleeve

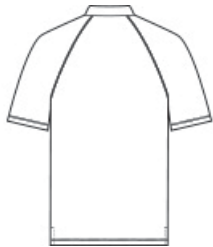
CARE INSTRUCTIONS

Machine Wash Cold With Like Colors. Do Not Use Fabric Softener. Only Non-Chlorine Bleach, When Needed. Tumble Dry Low. Remove Promptly. Cool Iron, If Necessary.

Sketches



front



back

SPEC SHEET + MEASUREMENTS



New Era® Power Polo. NEA225

PRODUCT MEASUREMENTS

| | XS | S | M | L | XL | 2XL | 3XL | 4XL |
|-----------------------------------|--------|--------|--------|--------|--------|--------|--------|--------|
| Body Length at Back | 27 | 28 | 29 | 30 | 31 | 32 | 32 3/4 | 33 1/2 |
| Chest | 18 | 19 1/2 | 21 | 22 1/2 | 24 1/2 | 26 1/2 | 29 | 32 |
| Raglans and Dolmans Sleeve Length | 16 1/4 | 17 | 17 3/4 | 18 1/2 | 19 1/4 | 20 | 20 3/4 | 21 1/2 |

Body Length at Back: Measured from high point shoulder to finished hem at back.

Chest: Measured across the chest one inch below armhole when laid flat.

Raglans and Dolmans Sleeve Length: Measure from neck edge to finished hem.

SIZE CHARTS

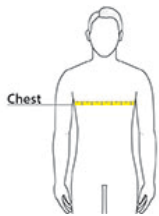
| | XS | S | M | L | XL | 2XL | 3XL | 4XL |
|-------|-------|-------|-------|-------|-------|-------|-------|-------|
| Chest | 32-34 | 35-37 | 38-40 | 41-43 | 44-47 | 48-51 | 52-56 | 57-61 |

SPEC SHEET + MEASUREMENTS



New Era® Power Polo. NEA225

HOW TO MEASURE



CHEST

Measure under the arm and around the fullest part of the chest with arms down, keeping tape horizontal.

COLORS



Black
PMS BLACK
C



Royal Heather
PMS 3597C



Shadow Grey
Heather
PMS COOL
GREY 10C



True Navy
PMS 533C



White